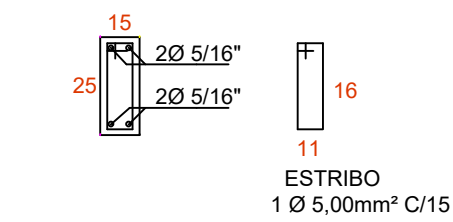
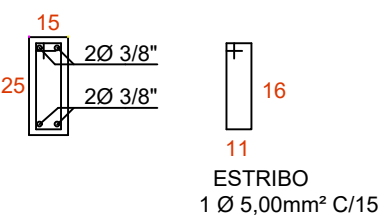


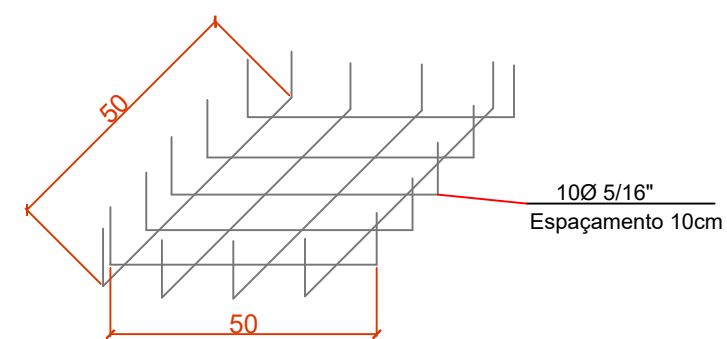
LOCAÇÃO ESTACAS E PILARES



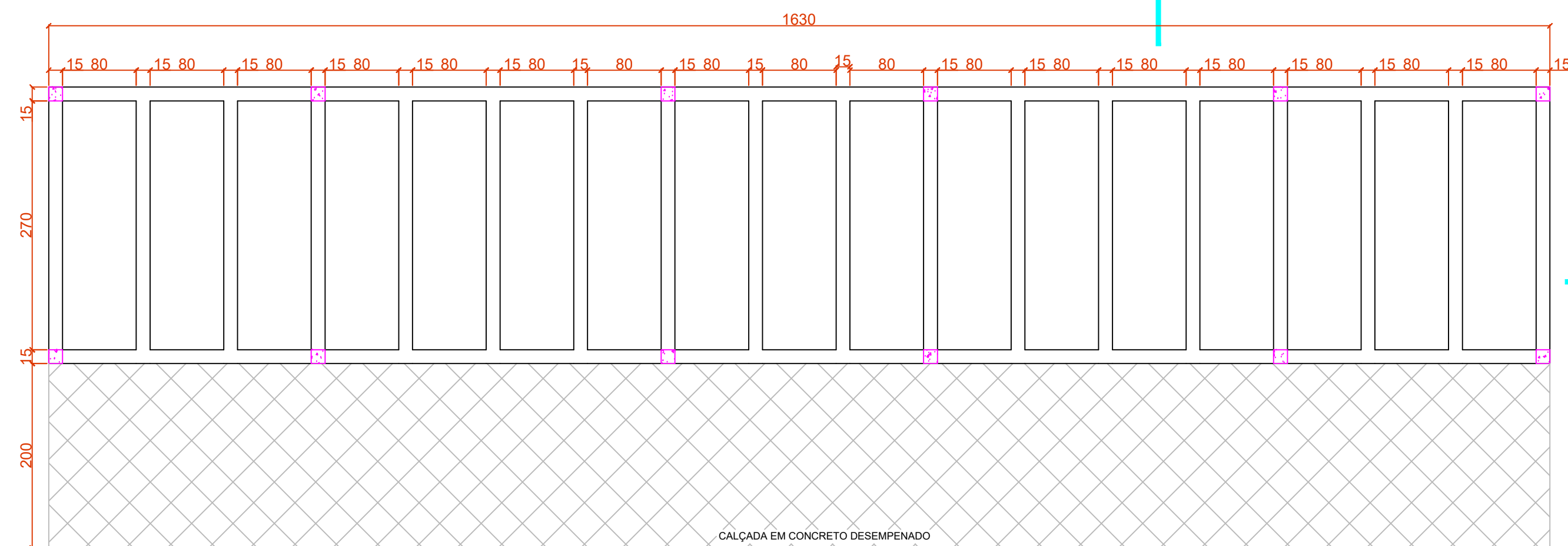
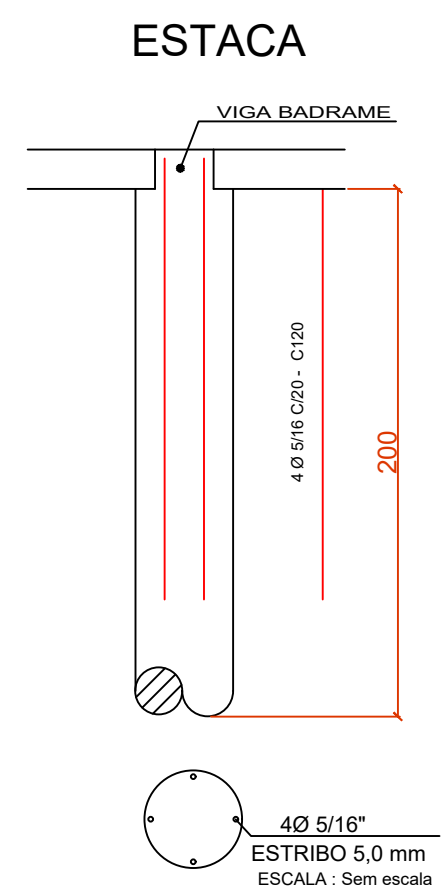
01 - DETALHE DAS VIGAS BALDRAME



02 - DETALHE DAS PILARES

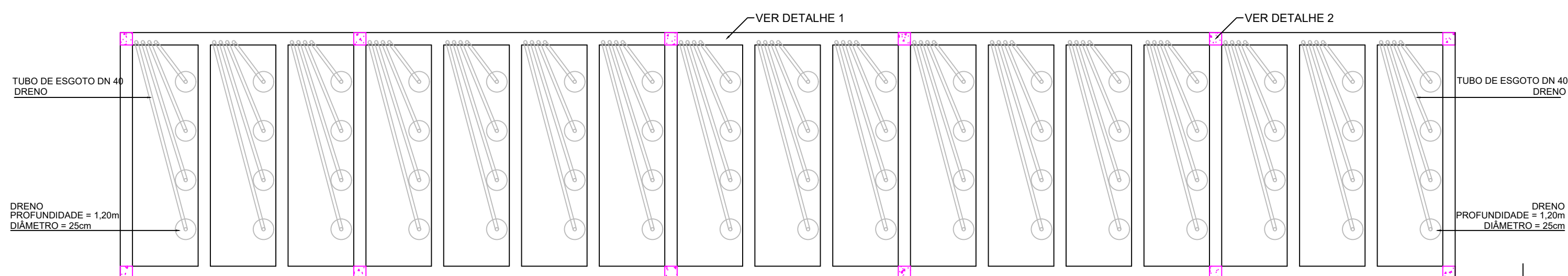


03 - DETALHES DOS BLOCOS



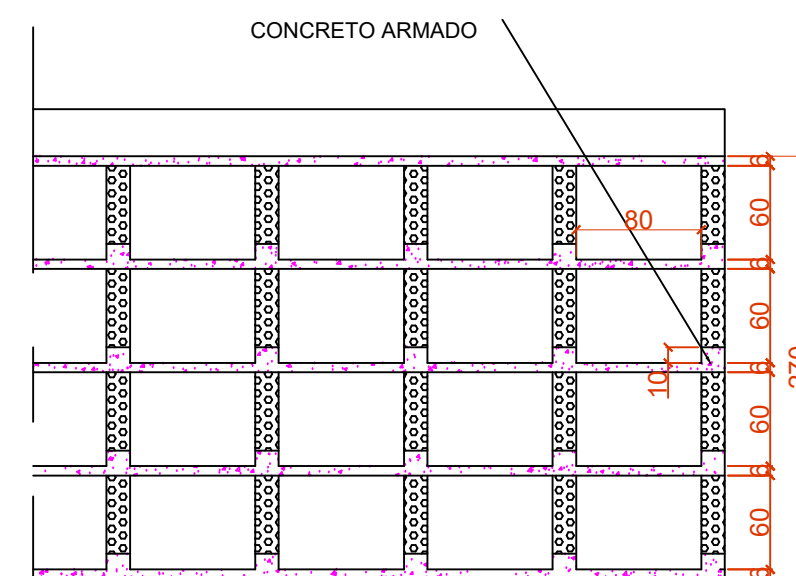
PLANTA BAIXA BLOCO 1 E BLOCO 2

ESCALA: 1/50
AREA = 48,90 M²



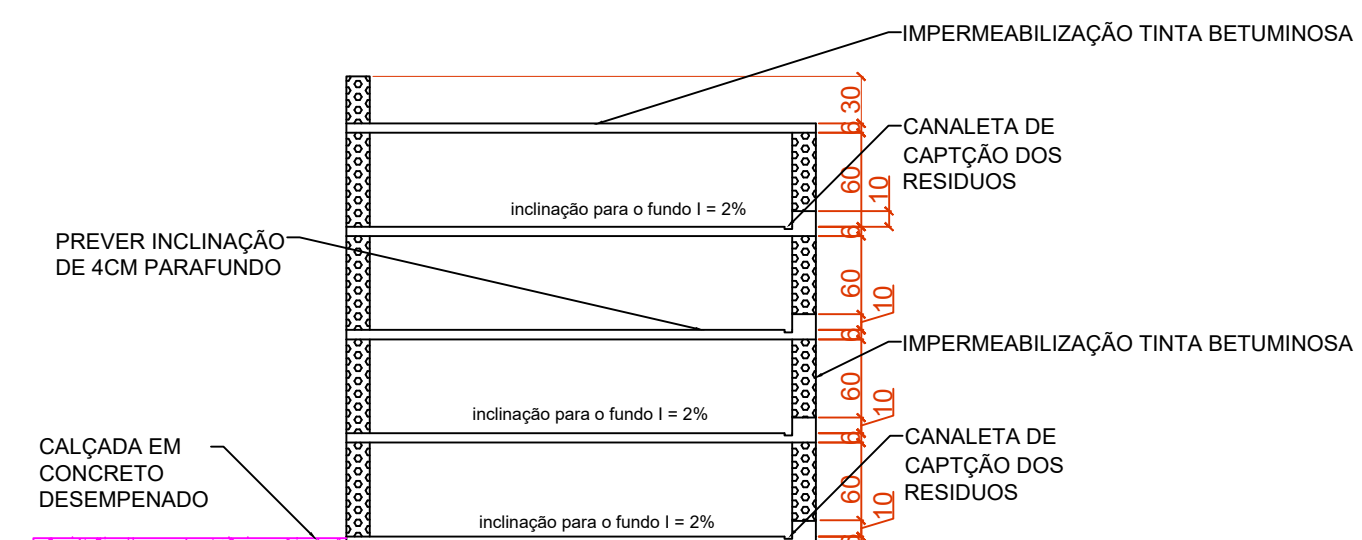
DETALHAMENTO BALDRAME E DRENAGEM BLOCO 1 E 2

ESCALA: 1/50
AREA = 48,90 M²



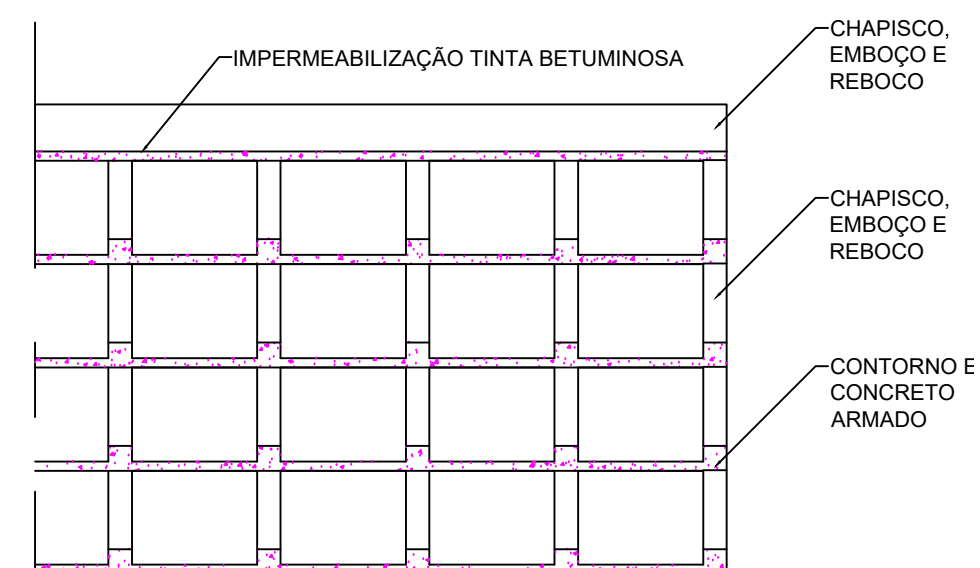
CORTE - AA

ESCALA: 1/50



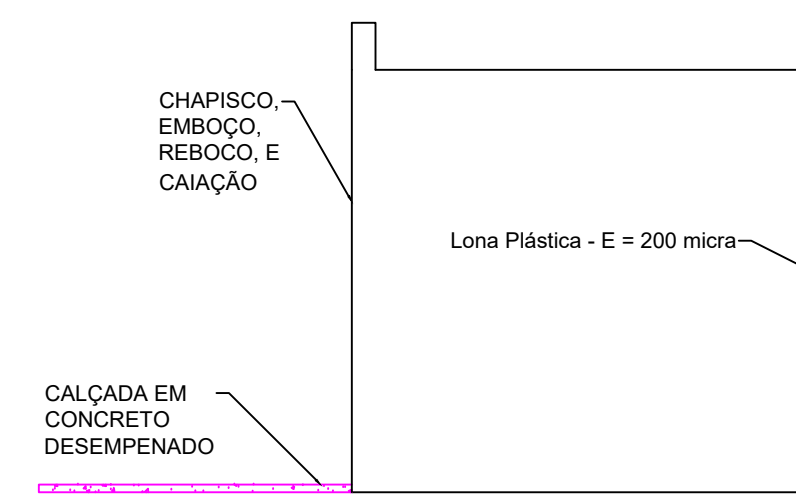
CORTE - BB

ESCALA: 1/50



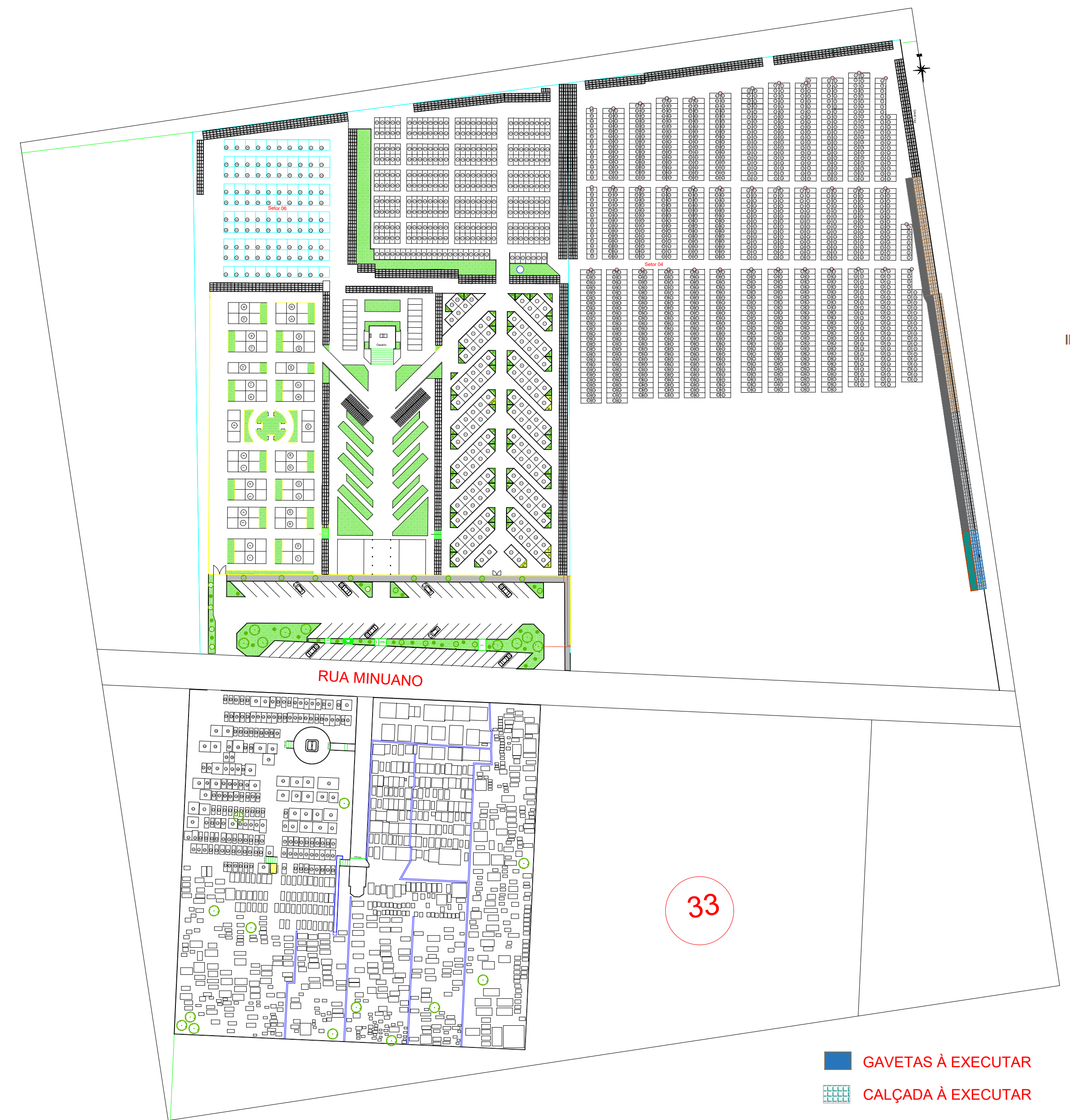
VISTA FRONTAL

ESCALA: 1/50



VISTA LATERAL

ESCALA: 1/50



GAVETAS À EXECUTAR

CALÇADA À EXECUTAR

APROVAÇÕES PÚBLICAS:

OBRA:

CONSTRUÇÃO DE 01 BLOCO COM 68 GAVETAS MORTUÁRIAS



RESPONSÁVEL TÉCNICO:

Kaio Cesar Ramos Maciel
CREA-PR: 175.142/D

LOCAL:
Rua Minuano, Bairro Condá

PROPRIETÁRIO:

Município de Medianeira -PR
Antônio França - Prefeito

CONTEÚDO:

Projeto de construção de 1 bloco com 68 gavetas no Cemitério Municipal.

ESCALA:
Indicada

DATA:
Novembro/2022

DESENHO: Kaio Cesar
Suelen Vieira

RANCHA:

1/1